



THE TIMETABLE

THE OFFICIAL NEWSLETTER OF THE
ILLINOIS VALLEY DIVISION

NATIONAL MODEL RAILROAD ASSOCIATION

Volume 42, No.1, January 2023

WEBSITE: nmra-ivd.org



Hello IVD members,

Here it is once again, time for another gathering of IVD members to meet for fun, learning and most importantly FELLOWSHIP!

Not much has happened as we all just went through the holidays and sure not much has happened since the last IVD Meet. I hope everyone had a great Thanksgiving, Christmas and New Years!

Our next meeting will be held at the Chatham Depot in Chatham, IL on January 21st, 2023. The doors will open at 12pm for some fellowship prior to the meeting. We will have 2 clinics presented by Thomas Ose and Gregor Moe. There will also be 2 layouts open after the meeting. Look forward to seeing you there!

Our Annual Potluck dinner will be held on Feb 18th, 2023, with location to be determined. Look for more information to follow the closer we get to the date.

Also, as a reminder, the IVD will be hosting the Midwest Regional Board Meeting in May on the same day as our IVD Meet. The Board meeting will be held in the same location prior to our IVD meet. More details come the closer we get to that event.

Highball!!!

Jim Tatum

IVD Superintendent

16 Page Special Edition

Election Preview Scratchbuilding a Cabin

IMPORTANT NOTICE TO ALL MEMBERS AND PARTICIPANTS

MASK MANDATE FOR INDOOR MEETINGS

With the relaxing of the mandate for wearing masks while indoors by the State of Illinois, the Illinois Valley Division will follow the instructions on mask use by the facility being used for our meetings.

Information compiled herein is presented to the membership on an "as submitted by the authors" basis, and is assumed complete and accurate by the Editor as of the "Deadline For Submissions" date for inclusion in this edition of the newsletter, as posted in the previous, most recent edition of the TIMETABLE. Statements contained in this document are strictly the beliefs and/or opinions of the writer presenting them and not necessarily those of, or endorsed by, the National Model Railroad Association (NMRA) of Soddy Daisy, TN, USA, its Midwest Region, or its Illinois Valley Division of the NMRA or their officers, agents and designates thereof. Information presented as factual is assumed true and accurate to the best knowledge and intent of the presenter of that information, and are believed to be such in good faith when accepted for inclusion in this newsletter.

DIVISION OFFICERS



SUPERINTENDENT (2022)

Jim Tatum
(309)-547-0312
superintendent@nmra-ivd.org



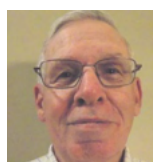
ASST. SUPERINTENDENT (2023) **IVD TIMETABLE EDITOR and AP CHAIRPERSON**

Minton Dings, MMR®
(309)-241-4504
greenriverbranch1957@gmail.com



CHIEF CLERK (2022)

Randy Sommer
(309)274-4563
chief.clerk@nmra-ivd.org



PAYMASTER (2023)

Ken Burr
(309)232-9202
paymaster@nmra-ive.org

TRAINMASTERS

District 1—Peoria & Tazewell Counties

Russ Smith
309-255-2058
district1@nmra-ivd.org



DISTRICT 2 (Appointed) - Grundy, Livingston,

McLean & Woodford Co.

Jeff Deasy
217-836-0223
district23@nmra-ivd.org



DISTRICT 3 (2021) - Bureau, LaSalle, Marshall,

Putnam & Stark Co. (2023)

David Hawkey
(309)274-6150
district3@nmra-ivd.org



DISTRICT 4 (2023) - Peoria & Tazewell Co.

Larry Nelson
(309)789-6447
district4@nmra-ivd.org



DISTRICT 5 (2021) - Adams, Brown, Cass, Hancock, **Logan, Mason, McDonough, Menard, Morgan, Pike,** **Sangamon, Schuyler & Scott Co. (2023)**

Thomas Ose
(217)483-4368
district5@nmra-ivd.org



Year listed with title indicates the end of present term.

2019 Illinois Valley Division, Midwest Region, NMRA
Photos by the contributors and editor
All rights reserved but permission will usually be granted
Contact editor at greenriverbranch1957@gmail.com

Upcoming 2023 IVD Meetings

Membership Meetings:

Division in-person meetings have now resumed with the September 2021 meeting. Membership meetings are held on the third Saturday of January, March, May, September and November at the Peoria Public Library, North Branch, 3001 West Grand Avenue, Peoria at 1:00 pm unless otherwise announced. See below. Doors open at 12 noon.

JANUARY 21, 2023 DIVISION MEET:

The division has been invited to meet once again in the meeting room of the Chatham Railroad Museum, 100 North State Street, Chatham, Illinois. Doors open at 12 noon and the meeting at 1:00 pm. See the map on the last page of this newsletter. Members who want models judged for the Achievement Program need to email Minton.

Contests: (1) Scratchbuilt Locomotives and Cars and (2) Kitbashed Locomotives and Cars.

Two clinics will be presented: Tom Ose, "Arduinos Update and What is New," and Gregor Moe, "Static Grass as Scenery."

There will be two layouts open for viewing: Gregor Moe and Tom Ose.

Masks may be the order of the day. Be prepared if that is the case.

Board of Directors Meetings:

The next Board of Directors Meeting, will be Sunday, February 19, 2023, 6:00 pm by Zoom. Members who wish to attend need to contact Jim Tatum, Superintendent at the email address listed to the left of this page to receive the Zoom invitation.

2023 POPULAR VOTE CONTEST SCHEDULE

January: (1) Scratchbuilt Locomotives and Cars
(2) Kitbashed Locomotive's and Cars

March: (1) Diesel Locomotives
(2) Photos of Models

May: (1) Buildings Off Line
(2) MOW, Cars, Vehicles and Equipment

September: (1) Photos of Layouts
(2) Specialty Railroad Cars, Non-MOW

November: (1) Passenger Cars
(2) Bridges

NOVEMBER 2022 LAYOUT TOUR

AR&K / GM&O

Russ Smith, Washington, Illinois



Assistant Superintendent: Two Year Term

Duties:

1. Shall assist the Superintendent in the performance of his/her duties and in the absence of, or inability of, the superintendent to act, shall assume any and all of the Superintendent's responsibilities and duties.
2. Shall be responsible for the Division contests, including selection of categories of competition, interpretation of rules, criteria for judging, selection and training of judges and distribution of awards.
 - a. May appoint as many persons as necessary to assist in the handling and judging of contests.
 - b. May not enter any judged Division contest as a participant during his/her term of office, but may participate in popular vote contests..
 - c. Where practical, will attempt to make division contests conform to Regional and National norms. All contests involving model construction will be in conformity with Achievement Program judging guidelines.
3. Shall be the chairman of the Nominating Committee.

Paymaster: Two Year Term

Duties:

1. Shall be responsible for the direction and coordination of the financial activities of the Division.
2. Shall set up and manage all necessary bank accounts for the Division.
3. In the absence of, or inability of the Paymaster to act, his/her duties revert to the Superintendent.
4. Shall pay by check and mark "Paid" all properly approved bills and expenses transmitted to him/her.
5. Shall keep an accurate record of all cash receipts, payments and disbursements, segregating them according to their respective funds or accounts.
6. Shall submit to all regular Board of Directors and Division business meetings a report of all income and expenses since the previous report. A written copy of this report will be given to the Chief Clerk at each meeting, to be included as part of the minutes.

Trainmasters: Two Year Terms

District 1: Representing Peoria and Tazewell Coun-

ties.

District 3: Representing Bureau, LaSalle, Marshall, Putnam and Stark Counties

District 5: Representing Adams, Brown, Cass, Hancock, Logan, Mason, McDonough, Menard, Morgan, Pike, Sangamon, Schuyler and Scott Counties.

Duties:

1. Shall each be elected to represent the members of the respective areas of the Division on the Board of Directors.
2. The geographical areas of each Trainmaster's area is listed above with boundaries to be reviewed every two years with the goal of equal membership from each district . . .
3. No More than one Trainmaster shall be elected from each district
4. If for any reason no one wishes to run for Trainmaster for a given district, the Superintendent shall appoint a Trainmaster from that district. If no one accepts the appointment, then the Superintendent shall appoint a Trainmaster at Large to represent the district with approval of the Board of Directors.
5. The District Trainmasters shall be responsible to coordinate the place of the meeting, clinics, and layouts on tour for the annual meeting in their district.
 - a. The trainmaster may appoint a member(s) to assist in the planning for the meet
 - b. The trainmaster may request the assistance of the Superintendent or other officers for resources available to complete the plans for the meet.
 - c. The trainmaster shall report to the Superintendent the plans for the meet.

FOR THOSE WHO WISH OR ARE WILLING TO SERVE

Those who are willing to serve on the Division's Board of Directors shall contact the Assistant Superintendent stating their intent. A brief biographical statement and a recent picture needs to be submitted to the editor by February 13, 2023 for publication in the March TIMETABLE.

SCRATCHBUILDING A CABIN

by Minton Dings, MMR®



NOTE: This special addition to *The Timetable* is a revision of a series of three articles written for *RealRail*, The Railroad Education and Learning Center of Florida, a 501c3 educational organization located in Bradenton, Florida. I have been a member of this group for several years and write articles for their newsletter under the title of *“Thoughts of a Long Time Ferroequinologist”* and present clinics during my yearly visits each fall.

The cabin pictured here is a board-by-board project made of wood which seems to be a simple project, and it can be. For those who want the challenge of building a model in much the same manner as the prototypical cabin would have been built, this will be a challenge. I know, because it was a learning experience for me, both in what I could accomplish and revealed some of my limitations.

Included in these instructions will be notes about how some shortcuts can be made to make the project less of a challenge for those who feel they do not have the time or suspect their modeling has not yet attained this level of skill. These shortcut methods will appear in *italics*.

Although this will be presented as a wood structure, it could be constructed with styrene for those who prefer to work with styrene. Although I prefer wood, believing that only wood looks like wood, the reality is that the surface of styrene can be made to look like wood.

TOOLS NEEDED FOR THIS PROJECT

- A scale ruler. This project can be constructed in any scale because all measurements are in scale

feet and inches unless specifically indicated as dimensional lumber.

- A square or squaring jig.
- A hobby knife with sharp #11 blades.
- A supply of #11 blades.
- A self healing hobby mat with a printed grid.
- Tweezers (for modelers in HO and N scales).
- A sharp pencil for making precise marks

OTHER HELPFUL TOOLS

- A small square or rectangular piece of plate glass for cutting the rather soft basswood.
- “The Chopper” by Northwest Short Line or similar cutting tool to cut exact multiples of parts.
- At least 36 sewing pins

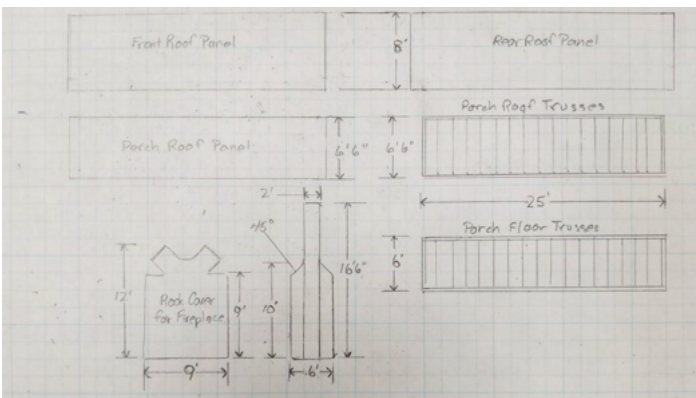
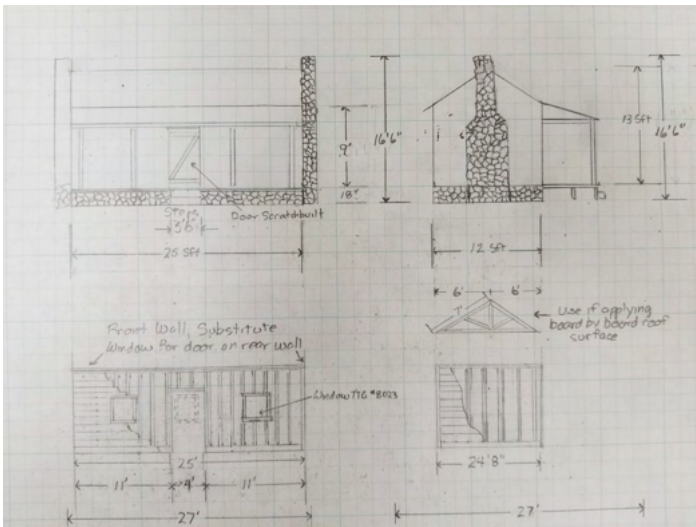
MATERIALS**

- Carpenter's Glue. I prefer Titebond™. The drying time is the same as other wood glues, but it seems to tack faster, saving time in the assembly process and is relatively inexpensive.
- A 12” square piece of heavy corrugated cardboard such is found in a shipping box.
- A 12” square of waxed paper taped to the cardboard.
- 2”x4” scale lumber for interior studs.
- 4”x4” scale lumber for frames, rafters and porch support structure.
- 1”x10” scale lumber (may substitute 2”x10” lumber)*
- 3/16” dimensional lumber for foundation and constructing chimney and fireplaces.
- 1/32 dimensional plain basswood board roof underlayment. (1/16 many be substituted.)*
- Cedar shingles from Bar Mills Scale Models, but also available from several providers.
- 5 Tichy #8023 windows.
- Stone wall printed paper from Noch in the chosen scale, but available from several providers.
- A weathering medium. I prefer a mixture of 91% alcohol and India ink in a mixture of one quart of alcohol to two tablespoons of India ink.

The wood used for the cabin should be weathered prior to construction. Soak the wood in the solution in a shallow flat pan overnight. Allow to dry on paper towels. The lumber may warp bit, but this can be corrected during construction. Larger pieces should dry under weight to prevent serious, unmanageable warping.

* Using the heavier stock will make a less fragile structure, but the heavier stock will be evident in the final result.

** Equivalent styrene materials may be substituted for those who prefer to work with it.

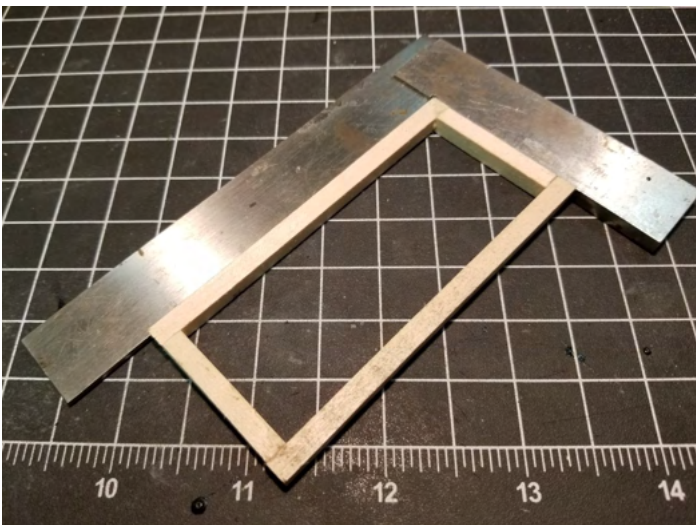


It is helpful to begin by drawing a sketch on graph paper with measurements and at least a hint as to what the parts will look like as they are being constructed.

BUILDING INSTRUCTIONS

1. CONSTRUCTING THE FOUNDATION

- ◇ **ALL MEASUREMENTS IN THIS ARTICLE ARE IN SCALE FEET AND INCHES UNLESS DESCRIBED AS DIMENSIONAL.**
- ◇ Cut 2 pieces of 3/16" dimensional lumber 25' long and 2 pieces 11'4" long. Be sure the ends are



square.

- ◇ Using a square or squaring jig, glue pieces to make a 25' by 12' rectangle. Check to be sure the corners are square. Allow to dry.
- ◇ Cut printed stone covering 18" wide by 78' long. This is a bit longer than the length than needed to cover the outside surface of the foundation, but will be needed to overlap to avoid a gap in the case the covering shrinks a bit when wet with glue.
- ◇ Fold the strip to fit the corners tightly. Be sure the overlap is located on a 25' side. This will be on the front of the foundation and will be hidden when the porch is constructed.
- ◇ Set aside to dry.

2. BUILDING THE WALLS

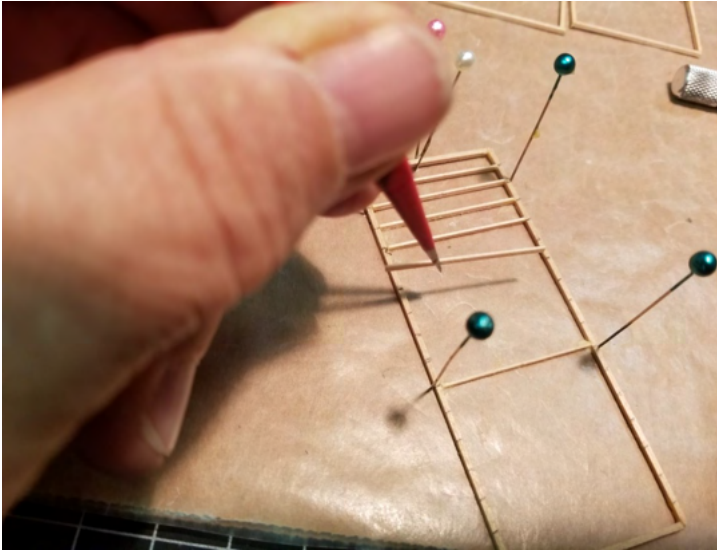
- ◇ **NOTE:** It is easier to build the walls flat on the work surface and erect later. These walls are fragile and will be safer if all cutting, inserting of parts and gluing happen on the work surface. Walls may tend to warp when the glue is wet and may need weight to help them dry flat.
- ◇ **Back Wall.** Begin with the back wall to give you practice before building the front wall.
- ◇ Look over the wood described in the following steps to designate which lumber you will want to weather.
- ◇ Cut 4 pieces of 4"x4" scale lumber 25' long and 4 pieces of 4"x4" scale lumber 8'4" for the front and back wall frames.
- ◇ Build a 25' by 9' rectangle for the wall frame. Check for squareness. Make a second rectangle. Building these parts on the waxed paper mounted



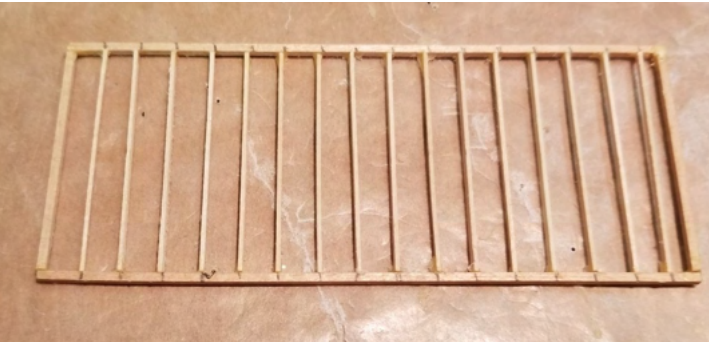
on the cardboard will allow for easy removal from the surface when dry.

- ◇ Cut 4 pieces of 4"x4" lumber 11'4" for the side wall header and foot and 4 pieces of 4"x4" lumber 8'4" for the ends.
- ◇ Build a 11'4" by 9' rectangle frame. Check for squareness. Build a second rectangle.
- ◇ Cut 56 pieces of 2"x4" lumber 8'4" long for the wall studs.
- ◇ Measure 18" intervals on the length of the front, back and side walls.

- ◇ (Normally studs would be placed on 16" centers, but in HO scale it is much easier to use the 1/6" marks on the HO scale ruler to set the placement of the studs.)
- ◇ Glue the studs into all four walls using the surface of the cardboard covered with waxed paper. Begin placing the studs, using pins to hold the wall in place while continuing to glue in the studs with a 2" side down. For HO and N scale, tweezers are nearly a must for placement of the studs. Allow to dry.

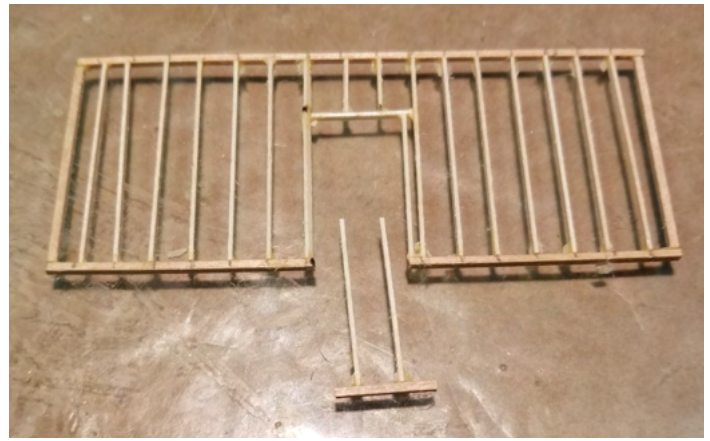


Notice the pins are holding the wall in place. One stud was placed about the middle of the wall to assist in stability to keep the frame from flexing during the placing of the studs

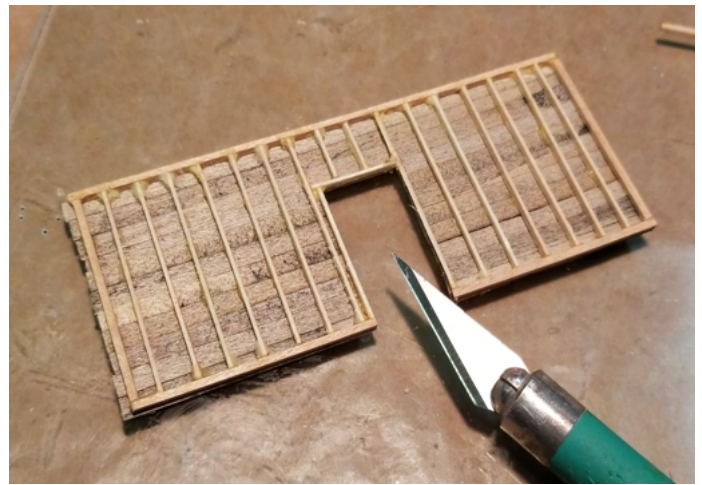


Example of a completed stud assembly.

- ◇ Cut 22 pieces of 1"x10" lumber into 9' lengths. Glue boards to the side walls from bottom to top.
- ◇ Cut 22 pieces of 1"x10" lumber 25'6" to cover the front and back walls. There will be a bit of overlap of these boards which will be trimmed later.
- ◇ This is the time to decide where to place the door and windows for the front and back walls. I cut the 4' opening for the door and glued in the door frame with 2"x4" lumber.



- ◇ When dry, place the walls outer surface down and remove the wall boards to provide for a 4' by 7' opening for the door and Tichy window openings with a sharp (new) #11 blade.



- ◇ Construct the window frames from 2"x4" lumber if scratchbuilt windows are to be made.
- ◇ **ANOTHER NOTE:** *For windows I used Tichy Train Group #8023 windows, because I could not construct scratchbuilt windows to my satisfaction. Many attempts were made, but I found my hands not steady enough to make the satisfactory windows. The plastic windows were primed in the paint booth. Use double sided tape to attach these small windows to a cardboard surface preventing them from flying away from the pressure of the spray. When dry, they were brushed painted with Folk Art #936 Barn Wood acrylic paint. I used canopy glue to represent old time blown glass window panes. Acetate could also be used to allow viewing through the panes.'*
- ◇ Cut 22 pieces of 1"x10" lumber 12' long to cover the side walls. Glue the boards in place from the bottom to the top. If there is a bit of overhang at the top, leave it to cover the joint between the wall and the transom which will sit on top of it in a later step of the assembly.

- ◇ Construct a door from 1"x4" and 1"x10" lumber. Trim the excess from the sides as seen below.
- ◇ If Tichy windows are used, insert them into the walls using a small amount of CA. Be careful not to have CA show on the boards. It will make a shiny, darker spot which will not be able to be removed.
- ◇ Find a small headed pin to use as a door handle. Paint it black. Glue in place with CA. When dry, trim as necessary to install the door.
- ◇ Glue the walls on top of the foundation with the front and back walls siding overlapping the side walls. Be sure to put the overlap of the foundation covering in the front wall. The excess on the front and back walls will be trimmed after the walls are assembled, installed and glue has dried.



- ◇ Use rubber bands to hold the walls in place. Be sure the walls are square upon the foundation. Allow to dry.



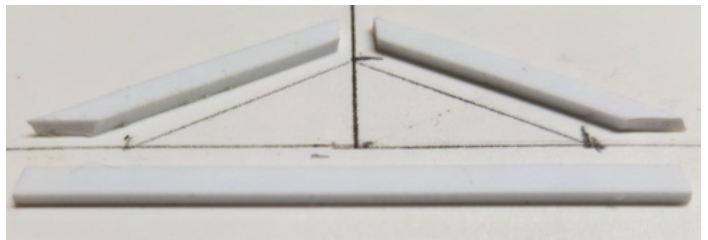
- ◇ When dry, trim the corners and touch up the board ends with the alcohol/India ink mix or other weathering medium.

AN ALTERNATIVE: *Instead of building a frame and studs covered with boards, 1/32" or 1/16" sheet basswood could be used for the walls with openings cut for the door and windows with a sharp hobby knife. The front and back walls will measure 25'x9'*

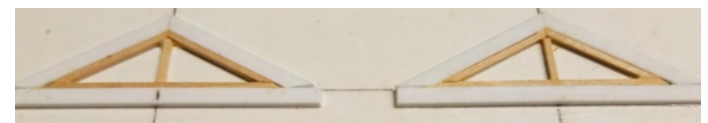
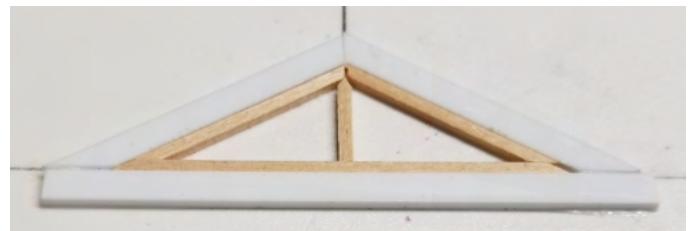
adjusted for the thickness of the walls. Scribed sheet basswood can be used to simulate the board siding or plain sheet can be covered with the 1"x10" boards as described in this article.

THE ROOF

- ◇ For a strong construction, the trusses for the roof need to line up with the studs in the walls. That means that there will need to be 18 identical trusses built. Therefore, a jig needs to be made from styrene. ***If working with swood, the jig needs to be made from styrene.*** When working with carpenter's glue, wood will not adhere styrene (tightly), or ***plastic glue will not adhere to wood.*** Do not use AC cyanoacrylate adhesive, which will glue anything to anything (almost).

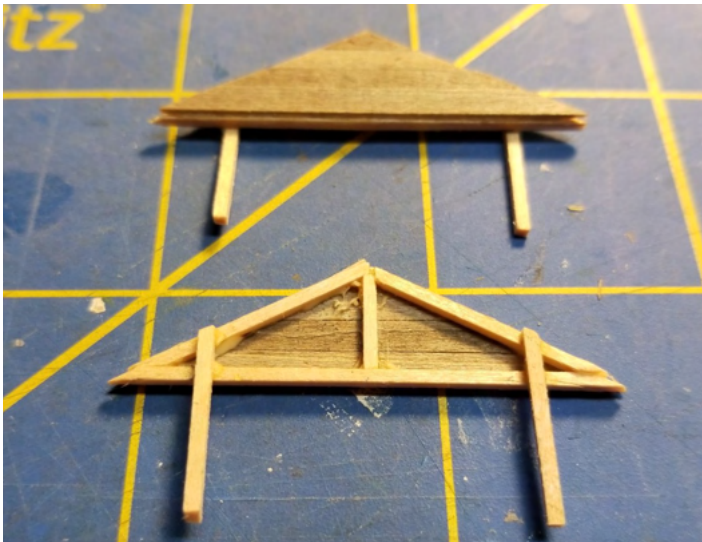


- ◇ Using the lines on a cutting mat as a guide, draw a 11' horizontal line and a 3'6" vertical line centered on the 11' line, forming a "T." Use a sheet of styrene as a base. Draw lines from the tip of the leg of the "T" to the outside edges of the horizontal line. See picture above.
- ◇ From square styrene stock, cut a bottom piece and glue outside of the line drawn on the styrene base sheet. 16' long and 2 pieces 8' long. This is where a cutting tool, such as the NWSL Chopper is handy to get identical sizes and square cuts. Trim the styrene to be the outside edge of the jig as shown below.
- ◇ Assemble the jig as shown.
- ◇ To speed the process, a second jig is helpful. Assemble it from the pieces cut as directed above from the first truss assembled.



- ◇ Using 4"x4" lumber, cut the truss parts. Using the jig angles, cut the new end angles of the parts.

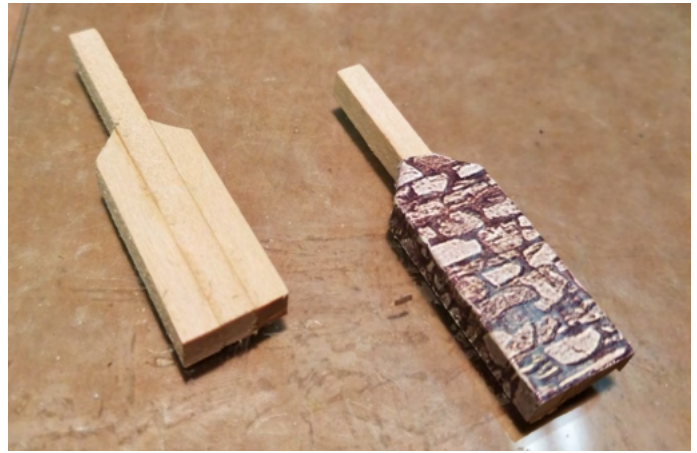
- ◇ If two truss jigs were made, assemble a second truss. You may find that the first truss is dry enough to remove from the jig by the time the second is assembled. Make 18.
- ◇ When the trusses are dried, stack them in the same direction as they came out of the jig, a separate pile for each jig. **(NOTE: I did not do this and had to do some adjusting and sanding when I assembled them during the roof building process.)**
- ◇ Cover two of the trusses as end walls with 1"x10" lumber. If there was an overlap of the top 1"x10' on the side walls, adjust the bottom board on the truss to match the top board of the wall. This will hide the seam between the side wall and the roof assembly. This is illustrated in the picture below.
- ◇ When dry, trim the roofline.
- ◇ Cut and glue the legs to the inside surface of the end trusses as shown above. These legs will hold



the ends in place. This is important if the roof is to be removable. It is also helpful in aligning the end trusses whether the roof is to be removable or not.

CHIMNEY(S) AND FIREPLACE(S)

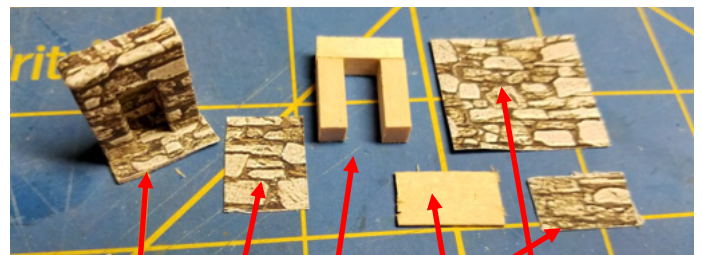
- ◇ While the roof parts are drying, the chimney(s) and fireplace(s) can be assembled.
- ◇ The chimney is assembled by gluing side by side 3 3/16" dimensional lumber. The center piece is to be 16'6", The side pieces are 12' long with a 45 degree angle cut from one end as illustrated below.
- ◇ Cover the chimney with the printed paper stock which was also used for the foundation. Apply the covering in two parts: bottom to the top of the 45 degree angle and a length to the top of the chimney. Glue the bottom to the top of the 45 degree angle tightly on the front and two sides, leaving the back uncovered. The top part of the chim



- ◇ ney will be wrapped on all four sides. Overlap the cover a bit. The overlap should be to the back of the chimney.



- ◇ Glue the chimney(s) to the center of the exterior of the side walls.
- ◇ The fireplace(s) are constructed from the 3/16" dimensional lumber as illustrated below. Use the printed paper for inner sides, outer sides and back interior. The inside can be heavily weathered.



- ◇ Install the fireplace(s) after the floor is installed.

CABIN FLOOR

- ◇ Install a 3/16" dimensional center support for the floor.



- ◇ Use a 1/32" sheet for the floor underlayment measuring 24'4" by 11'4". Cover the floor with 1"x10" boards. Preassemble the floor before installing it inside the cabin. It may need to be trimmed a bit to fit.



- ◇ The fireplace(s) now can be installed at the end(s) of the cabin. The studs behind the fireplace(s) can be carefully removed with a sharp hobby knife so that the back of the fireplace(s) will be against the wall, simulating that the stonework reaches through the wall.

BUILDING THE ROOF

- ◇ Cut two roof panels, 27'x8' from sheet basswood. (Constructing the roof from 1"x10" boards leaves the roof assembly too fragile to be removable and subject to warping when the shingles are applied.)
- ◇ Hold the end trusses to the top of the side walls with my favorite clamps, clothespins. Center the roof panels on the roof. Mark and cut notches for the chimney(s) on the top corners. The fit should be snug. Glue the first roof panel to the end trusses. Allow to dry.
- ◇ Repeat the instructions for gluing the opposite roof panel to the end trusses. Allow to dry.
- ◇ Remove the roof. Measure between the ends in

18" intervals to match the wall studs to determine the location of the trusses.



- ◇ Being careful not to mix the position of the trusses in their piles, begin applying them to the roof panels with the point of the trusses snugly in the peak of the roof. Try to get them as square as possible.



Note that the trusses in this picture are not even because I mixed the direction of the parts as they came out of the jigs. They had to be sanded to fit the top of the frame of the front and back walls. Lesson learned.

- ◇ When all trusses are in place, allow to dry.
- ◇ When dry, try the roof on for fit. If it does not set down against the front and back walls evenly, a bit of the trusses may have to be sanded, but hopefully not too many.

THE PORCH

- ◇ The cabin now needs a front porch, shingles on the roofs and interior details if the modeler desires to show the inside.
- ◇ Cut 5 pieces of 4"x4" lumber 25' long.
- ◇ Cut 17 pieces of 4"x4" lumber 6'4" long and set aside with 2 of the 25' beams for the porch roof.
- ◇ Cut 17 pieces of 4"x4" lumber 5'4" long and set aside with 2 of the 25' beams for the porch floor.
- ◇ Set the remaining 25' beam aside for later use.
- ◇ Build a rectangle 25' by 7' for the porch roof. Be sure the floor frame is square. Use the waxed paper on cardboard and pins to hold the frame may be helpful. Allow to dry.
- ◇ Mark 18" intervals and glue the 6'4" studs. Set aside to dry.
- ◇ Build a rectangle 25' by 6' for the porch floor. Be sure the frame is square.
- ◇ Mark 18" intervals and glue in the 5'4" studs. Set aside to dry.



- ◇ Cut 6 pieces of 1"x10 boards 25' long and glue to the porch floor frame. (In the illustrations 1"x8" boards were used because I ran out of 1"x10" lumber.) Dry with weight to floor surface.
- ◇ Cut a sheet of basswood 27' by 8' of 1/32" dimensional lumber for the roof. Glue the roof frame and truss assembly to the sheet with one 27' edge flush to the frame and leaving a slight overhand on the other 27' side that will butt against the front wall when mounted. Set aside to dry.
- ◇ The shingles are weathered cedar from Bar Mills Scale Models. Similar shingles can be purchased from many other providers.



- ◇ The technique for shingling the roofs on the porch and cabin is the same. The first row of shingles is a narrow piece of scrap found between the rows of shingles. This is used to line up the first row to prevent a hump in the first row, making for a smooth appearing roof.
- ◇ Parallel lines are drawn across the roof panels as a reference to keep the lines of shingles even and straight.
- ◇ Place the porch roof upside down on the waxed paper with weight to allow it to dry without warping. The cabin roof will not warp.
- ◇ Glue the remaining 25' 4"x4" beam to the cabin front wall at the top of the second board down from the top of the wall. This will be a support for the porch roof.
- ◇ Cut 8 12" porch support posts to be glued horizontally at 6'4" intervals under both front and back of the floor. When dry, glue the porch floor to the front cabin wall. Allow to dry.



Support Posts

- ◇ Cut 4 4"x4" lumber 8' for the porch support posts.
- ◇ Glue the porch roof to the front cabin wall and place the 4 porch posts over the 4 porch support posts to support the front of the porch roof. This simple instruction turned out to be a difficult task. Set and glue in the corner 8' roof support posts and allow to dry. Then set the two inner posts.
- ◇ The front steps can be constructed from stacked 1/16 dimensional lumber, cut to an appropriate length, and placed under the front of the porch.



If your shingles do not look weathered, paint streaks of alcohol/India ink solution in a downward motion. Allow to dry to access whether they need more weathering.

FINISH THE CHIMNEY(S)

- ◇ The initial plan was to drill the top of the chimneys, but I was concerned that the wood might splinter. Therefore, I painted the tops black and simulated a modern technique of lining the chimneys with pipe as a safety measure.
- ◇ I cut the end of a narrow black plastic straw I saved from some local eatery I had visited. I used CA to glue it to the top of the chimneys.

INTERIOR DETAIL IDEAS

To dress up the interior of the cabin, sheet lumber can be used to apply interior walls. A dividing wall can be built into the cabin to make a bedroom and main living area which each has its own fireplace. A table and counter space can be put inside. A stack of firewood would be nice too. A rocking chair or two on the front porch would add to the ambiance.

All these items, except the racking chairs can be fashioned from basswood. Interior details can be purchased commercially

SOME PARTING THOUGHTS

If you have read this far, thanks for following along. I hope you are encouraged to build your own rustic cabin. If this is your first attempt to scratchbuilt a structure, you many have learned some new skills. And, if the cabin did not turn out to your satisfaction, be sure to try another similar project soon. Each effort will improve your skills and make your structures better.

There are several scratchbuilt structures on my layout. I realize that in some cases a "craftsman" kit might have been better built than my scratchbuilt effort. But the scratchbuilt structure is mine, designed and built from start to finish. In that I find satisfaction.

PERSONAL AND BUSINESS ADVERTISEMENTS AVAILABLE

Personal business sized layout ads are available to Illinois Divisions members at no cost.

Website Timetable Both

Business:

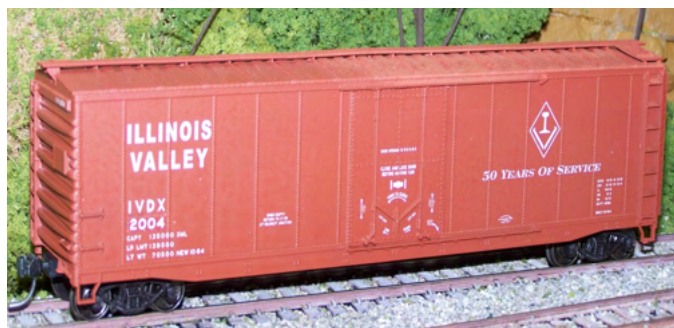
Business Card Size: \$20.00 \$12.50 \$30.00

Business Card X2: \$30.00 \$25.00 \$45.00

Make checks to Illinois Valley Division, NMRA. Send to Minton Dings, 15548 State Route 78, Havana, IL 62644-6803

Help in creating an ad is available by contacting Minton

50TH ANNIVERSARY BOXCARS AVAILABLE AT \$10 EACH



The Fifty Year Anniversary cars are still available. There are now only 35 boxcars left. The cars are for sale at the division meetings and at train fairs. The cost is reduced to \$10.00 each plus shipping. The cost by mail is \$10.00 each plus \$6.00 shipping, or \$7.50 shipping for 2 cars or \$8.50 shipping for 3 or 4 cars. Free decals are available for multiple purchases. The cars are available through Minton Dings at 15548 State Route 78, Havana IL, 62644-6803; telephone 309-241-4504, e-mail green-riverbranch1957@gmail.com (Put IVD CARS in the subject line for easy recognition). **Make checks payable to Minton Dings.** The cost of the cars will be reimbursed to the Illinois Valley Division.

Springfield Railroad Society, Inc.

TRAIN FAIR

March 12, 2023 - Orr Building - State Fairgrounds



***The Largest
Train Show
in Downstate
Illinois!***

Over 35,000 square feet of trains!



**Early Bird
shopping starts
at 9 am
for only \$10!**

Hundreds of vendor tables!

Buy - Sell - Trade Trains

Actual Operating Layouts

Admission \$5 after 10 am.

Children under 11 FREE / Free Parking / Hours 10 am to 4 pm

For more info, go to www.springfieldtrainfair.com

UPCOMING OPPORTUNITIES FOR MODEL RAILRODERS

Cross County Mall Train Show, Saturday and Sunday, January 21 and 22, 2023, 700 Broadway Avenue East, Mattoon, Illinois. Saturday 10 am to 6 pm, Sunday 11 am to 4 pm. Free admission and parking. Handicapped accessible.

La Crosse's 30th Annual Great Tri-State Rail Sale, Saturday, January 28, 2023, 9 am to 3 pm, La Crosse Center, 2nd and Pearl Streets, La Crosse, WI. Admission: \$5.00, Child under 12 free. Free parking and handicapped accessible.

Great Midwest Train Show, Sunday, February 5, 2023, DuPage County Fair Grounds, 2015 Manchester Road, Wheaton, Illinois. The show is scheduled for the first Sundays of each month of 2023 except no show in July and second Sunday of September, 9 am to 3 pm. Admission \$7, online \$6, and children under 11 free. Free parking and handicapped accessible.

Peoria Train Fair, Sunday, February 19, 2023, 10 am to 3 pm. Illinois Central College, IL Rt. 24, 1 mile east of IL Rt. 116, East Peoria, Illinois. Admission, Adult donation of \$3.00, children under 12 free with an adult. Free parking and handicap accessible.

Model Railroad Garage Sale, Saturday, March 4, 2023, 9 am to 2 pm, 4-H Building, Dubuque County Fairgrounds, 14569 Old Highway Road, Dubuque, Iowa. Admission \$3.00, Children 12 and under free with a paid adult. Free parking and handicapped accessible.

Boeing Employees Railroad Club (St. Louis) Railroad Swap Meet, Saturday, March 11, 2023, 10 am to 3 pm. Greenfelder Recreation Complex, St. Louis, Missouri. Admission \$5.00, children under 12 free. Free parking and handicapped accessible.

Springfield Railroad Society Train Fair, Sunday, March 12, 2023, 10:00 am to 4:00 pm, Orr Building, Illinois State Fairgrounds, Springfield, Illinois. Admission \$5.00, Children under 11 free. Early bird admission at 9:00 am—\$10.00. Free parking and handicapped accessible.

31st Rock River Valley Train Show, Saturday and Sunday, March 25 and 26, 2023, Harlem High School, 9229 North Alpine Road, Machesney Park, Illinois (Rockford Area). Admission \$5.00, children free. Free parking and handicapped accessible.

Boeing Employees Railroad Club (St. Louis) Railroad Swap Meet, Saturday, September 9, 2023, 10

am to 3 pm. Greenfelder Recreation Complex, St. Louis, Missouri. Admission \$5.00, children under 12 free.

5th Annual Sherman Scale Train Show, Sunday, October 22, 2023, 10 am to 3 pm, Sherman Athletic Club, 300 South First Street, Sherman, Illinois. Admission \$5.00, Children under 10 free. Early bird admission at 9 am, \$10.00. Free parking and handicapped accessible.

CLUB RELOCATION:

Western Illinois Model Train Club, with an HO scale layout, has moved to the former Viola Library next to the old Viola City Hall which is now the Viola Community Center. They plan to build a huge two level layout. They are looking for a few new members to join the club. The layout is to be DCC powered. Contact Allen Holdsworth a 309-7891-7873 for more information.

ILLINOIS VALLEY DIVISION ACHIEVEMENT PROGRAM

Following the passing of Marion Brasher, his records of the division Achievement Program have not been found. The search continues through contact with those who are handling Marion's estate.

In the meantime, a new file of Achievement Program records is being established. Members of the division who have completed, judged, and signed paperwork showing their work towards earning a certificate(s) should contact Minton Dings, MMR, Achievement Program chairperson, with copies of work completed to establish the new record.

If Marion's records are found, they will be digitalized and combined with the information gathered through this search. Volunteer hours toward the Volunteer Certificate may be the most difficult to verify. Contact Minton at 309/241-4504 or 15548 SR 78, Havana, IL 62644 or greenriver-branch1957@gmail.com.

IMPORTANT: Members who wish to have their work evaluated for credit toward their chosen certificate during a division meet, needs to contact Minton prior to the meeting to arrange for the judging team members to be present. See above for contact information.



Hours
10-6 Tue-Fri
10-8 Thu
10-5 Sat

I-55 @ US-136
across from
Dixie

Model Trains & Supplies

Tools & Accessories
Railroad Books & Magazines
DCC Systems & Decoders
Custom Installation

The **NEW** shop in the **OLD** depot

McLean Depot

309-244-5900 mcleandepot.com

200 E Dixie Rd, McLean, IL 61754



GUYANDOTTE DIVISION

Serving Virginians Through Three Eras

Michael Shockley
309-697-3242
docshock31@yahoo.com

*Sanford
&
Santa Fe*



*Service
&
Safety First*

Sanford Gordon
3901 N. Lynnwood Place
Peoria, Illinois 61614
email: gandsford69@comcast.net



Castle Trains & Treasures

Bruce & Janet Maurer
New & Used

Buy – Sell – Trade

4782 Old Jacksonville Rd. Springfield, IL 62711

217-793-0407

Tues, Sat & Sun 12pm-5pm, Thurs 12pm-7pm

cstlitrains@aol.com



STOP

LOOK

LISTEN

CULPEPPER & WESTERN R.R.

"Moving Freight & People"



Gary & Cullen Baker
2004 Dane Kelsey Drive
Pekin, IL 61554
phone: 309-353-8877
Gary: afpgary@comcast.net
Cullen: cmb3998@comcast.net



GREEN RIVER BRANCH
Kentucky Division
Illinois Central Railroad, 1957

Affiliated with:

Illinois Valley Division, NMRA
National Model Railroad Association
Illinois Central Historical Society
Illinois Central Historical Association
GM&O Historical Association
Real Rail, Bradenton, Florida

Minton Dings, MMR®
15548 State Route 78
Havana, Illinois 62644
(309)241-4504

e-mail: greenriverbranch1957@gmail.com

James F. Wise, MMR, 3207 N. Sheridan, Peoria, IL 61604



(309)231-9425

jameswise1234@comcast.net



OMS (re) Models

Train Repair – DCC Install
Layout Automation & Electronics
Model Building

Thomas M. Ose

217 483-4368

tmo@osemicro.com

www.omsremodels.com

Ed Brown's

UTICA AND MIDWESTERN

"Route of the ROCKET"



339 Johnson Street
Utica, IL
phone: 815-667-4818
email: brownes86@msn.com



f

IVD TIMETABLE

Minton Dings, MMR
15548 State Route 78
Havana, Illinois 62644-6803



FIRST CLASS MAIL

Postmaster:
Return Service Requested



January 21, 2023

THE ILLINOIS VALLEY DIVISION OF THE NMRA

DIVISION MEETING



CHATHAM RAILROAD MUSEUM
100 NORTH STATE STREET
CHATHAM, ILLINOIS

12:00 noon to 4 pm

MEMBERSHIP MEETING, CLINICS ON ARDUINO UP-
DATE AND STATIC GRASS AS SCENERY

POPULAR VOTE CONTESTS: (1) SCRATCHBUILT LOCO-
MOTIVES AND CARS AND (2) KITBASHED LOCOMO-
TIVES AND CARS
SALE TABLES AVAILABLE, SORRY NO DEALERS

